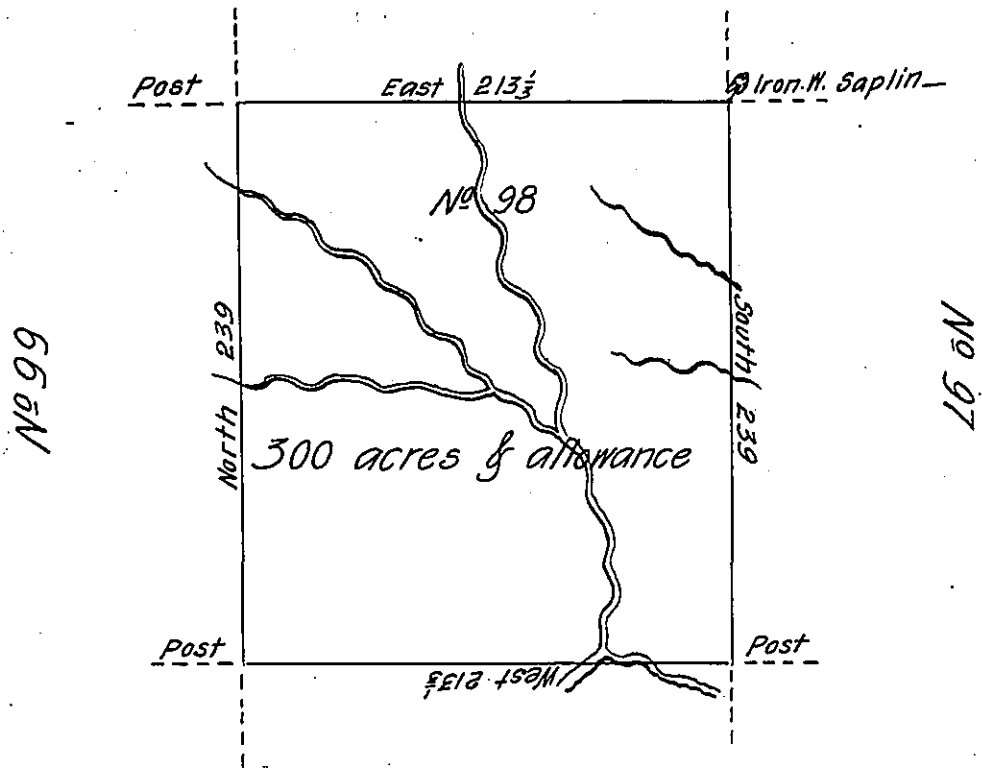


No 95



No 101

§ 27

Situate on Big Sawickly Creek Between the Twenty sixth Parallel in that Part of District No 3 to me Allotted on the North side of the River Ohio being part of the land appropriated for the Redemption of the Certificates of depreciation &c^e, Surveyed in June 1785 Pursuant to Instructions from Jno Lukens Esquire Surveyor Gen^l dated at Philad^a 5th-1785.

Nat^l Breeding D.S.

IN TESTIMONY that the above is a copy of the original remaining on file in the Department of Internal Affairs of Pennsylvania, made conformably to an Act of Assembly approved the 16th day of February, 1833, I have hereunto set my Hand and caused the Seal of said Department to be affixed at Harrisburg, this sixteenth day of August 1905.

Leae P Brown
Secretary of Internal Affairs.